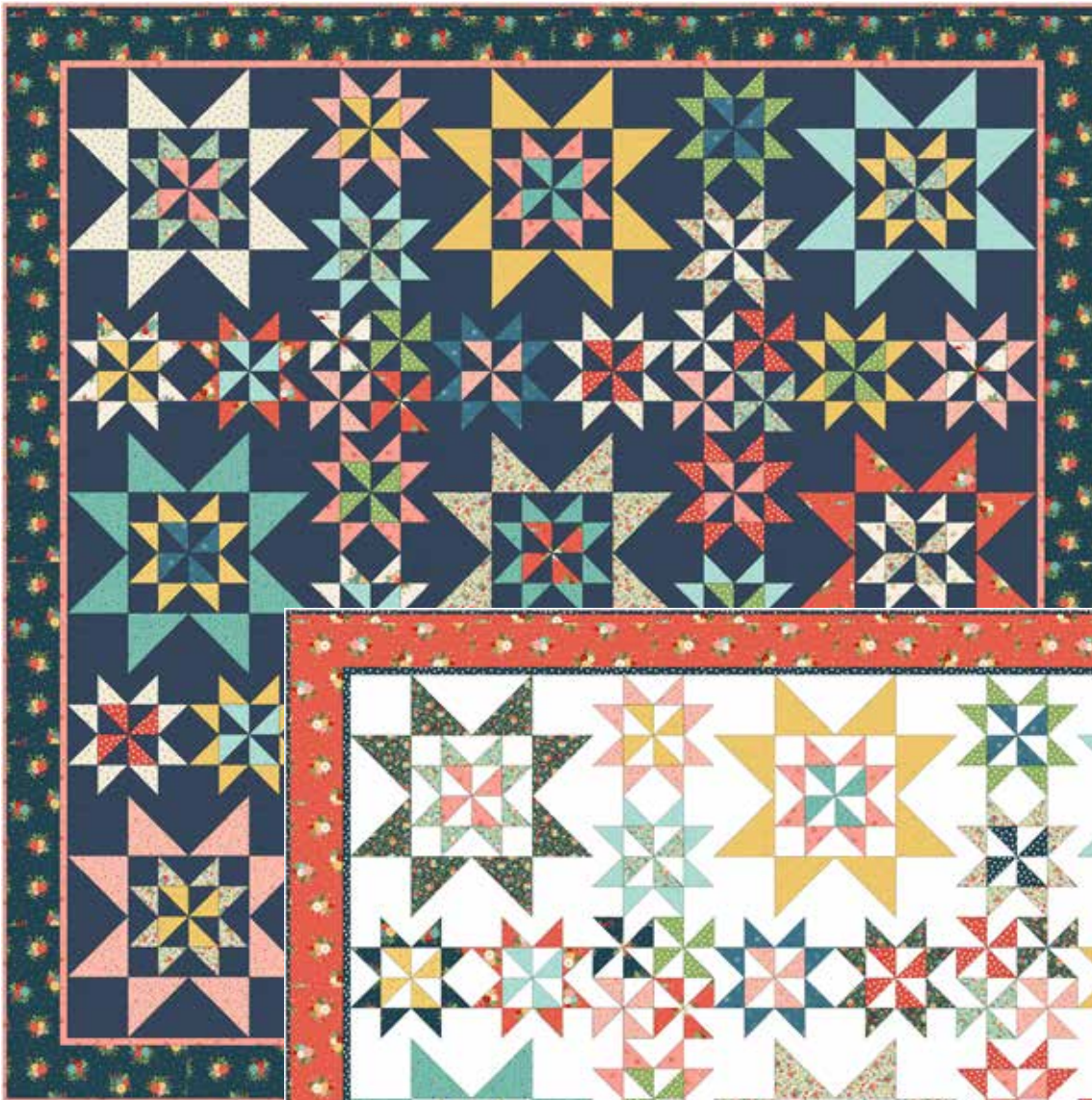


Amelia Quilt

Designed by Lynne Goldsworthy of lilysquilts.blogspot.com
72in / 1.8m square



[makoweruk](http://makoweruk.com)

Unit 14, Cordwallis Business Park, Clivemont Road, Maidenhead, Berkshire SL6 7BU
+44(0)1628 509640 sales@makoweruk.com www.makoweruk.com

Amelia Quilt

Designed by Lynne Goldsworthy of lilysquilts.blogspot.com
72in / 1.8m square

Fabric Requirements

Blue version	Cream version	Quantity	Cut
1473 B8	1473 Q2	3.50m / 3 ¾ yds	Background (BKG) - see cutting instructions
2509 B		1 m / 1 yd	Seven 4" WOF strips sewn end to end and cut into two 65 ½" and two 72 ½" lengths
2509 Q	2509 B	30cms / 12"	Two 5 ½" x 10 ¼" rectangles Four 6 ¼" squares
2509 R		30cms / 12"	Two 5 ½" x 10 ¼" rectangles Three 6 ¼" squares and one 3 ½" x 6 ¼" rectangle
	2509 R	1.25m / 1 ¼ yds	Seven 4" WOF strips sewn end to end and cut into two 65 ½" and two 72 ½" lengths Two 5 ½" x 10 ¼" rectangles Three 6 ¼" squares and one 3 ½" x 6 ¼" rectangle
2510 B	2510 B	30cms / 12"	Two 5 ½" x 10 ¼" rectangles Three 6 ¼" squares and one 3 ½" x 6 ¼" rectangle
2510 P		40cm / 15"	Seven 1" WOF strips sewn end to end and cut into two 64 ½" and two 65 ½" lengths Four 6 ¼" squares and one 3 ½" x 6 ¼" rectangle
	2510 P	FQ	Four 6 ¼" squares and one 3 ½" x 6 ¼" rectangle
2510 Q		FQ	Four 6 ¼" squares
	2513 B	40cm / 15"	Seven 1" WOF strips sewn end to end and cut into two 64 ½" and two 65 ½" lengths Four 6 ¼" squares
2512 Q	2511 B	30cms / 12"	Two 5 ½" x 10 ¼" rectangles Three 6 ¼" squares and one 3 ½" x 6 ¼" rectangle
2511 Q	2511 Q	30cms / 12"	Two 5 ½" x 10 ¼" rectangles Four 6 ¼" squares
2511 T	2511 T	FQ	Three 6 ¼" squares and one 3 ½" x 6 ¼" rectangle
2512 T	2512 T	30cms / 12"	Two 5 ½" x 10 ¼" rectangles Four 6 ¼" squares
2512 Y	2512 Y	FQ	Two 5 ½" x 10 ¼" rectangles Three 6 ¼" squares
2513 G	2513 G	FQ	Four 6 ¼" squares
2513 R	2513 R	FQ	Four 6 ¼" squares and one 3 ½" x 6 ¼" rectangle
2514 P	2514 P	30cms / 12"	Two 5 ½" x 10 ¼" rectangles Four 6 ¼" squares
2514 T	2514 T	30cms / 12"	Two 5 ½" x 10 ¼" rectangles Four 6 ¼" squares
2514 Y	2514 Y	FQ	Three 6 ¼" squares and one 3 ½" x 6 ¼" rectangle
2510 P	2513 B	75cms / ¾ yard	Eight 2 ½" WOF strips (binding)
2509 Q	2509 Q	4.25m / 4 ½ yds	Cut into two equal lengths
Wadding 279 Cotton Mix 80:20 from http://www.vlieseline.com/en/ 80" square / 2m square			
Thread - Aurifil 50wt for piecing and 40wt for quilting from http://www.aurifil.com			
Templates - Fifty-four 2" HST templates, Seven 2" HST half templates, Eighteen 4" HST templates			

Notes:

- Make sure to visit <http://www.makoweruk.com/projects/> to ensure you are working from the most up-to-date version of the pattern
- Makower UK provides the written instructions only to accompany the named collection. Retailers are free to use these free instructions to provide a fabric kit. Accurate cutting of fabric is down to the individual retailer and any fabric supply enquires should be directed to point of purchase
- Read the pattern in full before starting
- ¼" seams are used throughout except where stated otherwise
- Press after each seam, pressing seams open or to one side as preferred
- BKG - background
- WOF - width of fabric - a strip of fabric cut from selvedge to selvedge
- WOFQ - width of fat quarter - a strip of fabric cut from selvedge to centre cut from a FQ
- HST – half square triangle

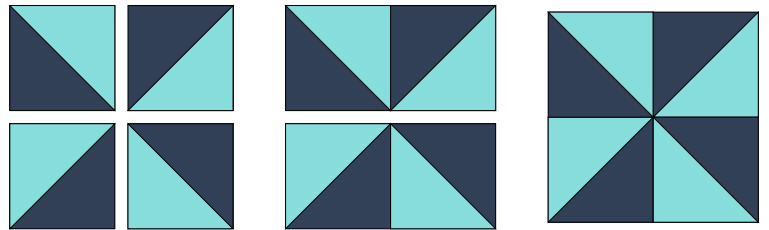
Making the quilt top

1. Follow the cutting instructions in the main fabric requirements table and cut the background (BKG) fabric as follows:
 - Five 5 ½" WOF strips cut into eighteen 5 ½" x 10 ¼" rectangles
 - Four 4 ½" WOF strips cut into thirty-six 4 ½" squares
 - Ten 6 ¼" WOF strips cut into fifty-four 6 ¼" squares and seven 3 ½" x 6 ¼" rectangles
 - Six 2 ½" WOF strips cut into ninety-six 2 ½" squares
2. You will be making eighteen sets of four 4" (finished) half square triangles (HSTs), fifty-four sets of eight 2" (finished) HSTs and seven sets of four 2" (finished) HSTs. These will make the large stars, small stars and pinwheels listed in the table below.

Blue version	Cream version	Large Stars	Small Stars	Pinwheels
2509 R	2509 R	1	2	3
2509 Q	2509 B	1	3	2
2510 B	2510 B	1	2	3
2510 P	2510 P		3	3
2510 Q			2	4
	2513 B		2	4
2512 Q	2511 B	1	2	3
2511 Q	2511 Q	1	3	2
2511 T	2511 T		2	3
2512 T	2512 T	1	2	4
2512 Y	2512 Y	1	2	2
2513 G	2513 G		2	4
2513 R	2513 R		2	5
2514 P	2514 P	1	2	4
2514 T	2514 T	1	2	4
2514 Y	2514 Y		2	3

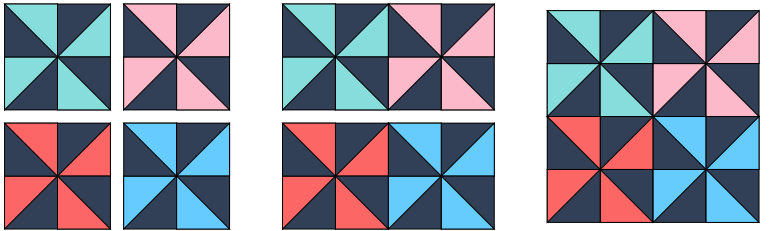
3. To make each set of four 4" (finished) HSTs, pin one BKG and one print 5 ½" x 10 ¼" rectangle to a 4" HST template with the fabrics right sides together and the BKG fabric next to the paper. Shorten your machine stitch to 1.5 and sew along all of the red lines. Cut the template and fabric along all the blue lines using a rotary cutter. Trim off the corners on each triangle along the green lines.
4. Press each HST unit open. Remove paper from the back of each HST unit.

5. Repeat this process using the 2" HST templates paired with the 6 ¼" squares and the 2" HST half templates paired with the 3 ½" x 6 ¼" rectangles to make the 2" (finished) HSTs.



figs 1-3

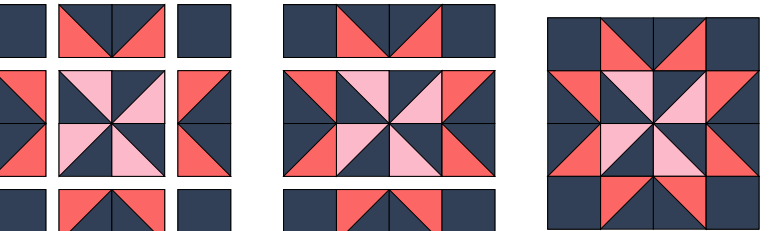
6. Make forty-nine pinwheels by sewing together four 2" HSTs into a 4-patch as shown in figs 1-3).



figs 4-6

7. Sew sixteen of those into pinwheel 4-patches as shown in figs 4-6.

8. Make the remaining pinwheels into small stars. To do this, sew the remaining 2" HSTs into pairs following the layout in fig 7.

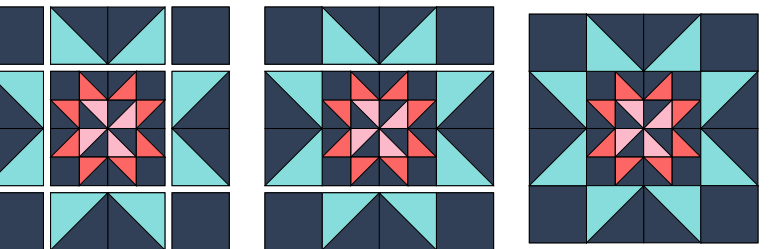


figs 7-9

9. Sew BKG 2 ½" squares to each end of two of these pairs and sew the remaining two pairs to either side of the pinwheel (fig 8).

10. Sew the three rows together to finish each small star (fig 9).

11. Make nine of the small stars into large stars. Make these in the same way as the small stars but using the 4" HSTs and the BKG 4 ½" squares.



figs 10-12

12. Sew the remaining small stars into pairs.

13. Sew the quilt top into the following rows (see the main quilt image for layout):

- Rows 1, 3, and 5 each containing three large stars and two pairs of small stars
- Rows 2 and 4 each containing three pairs of small stars and two pinwheel 4-patches

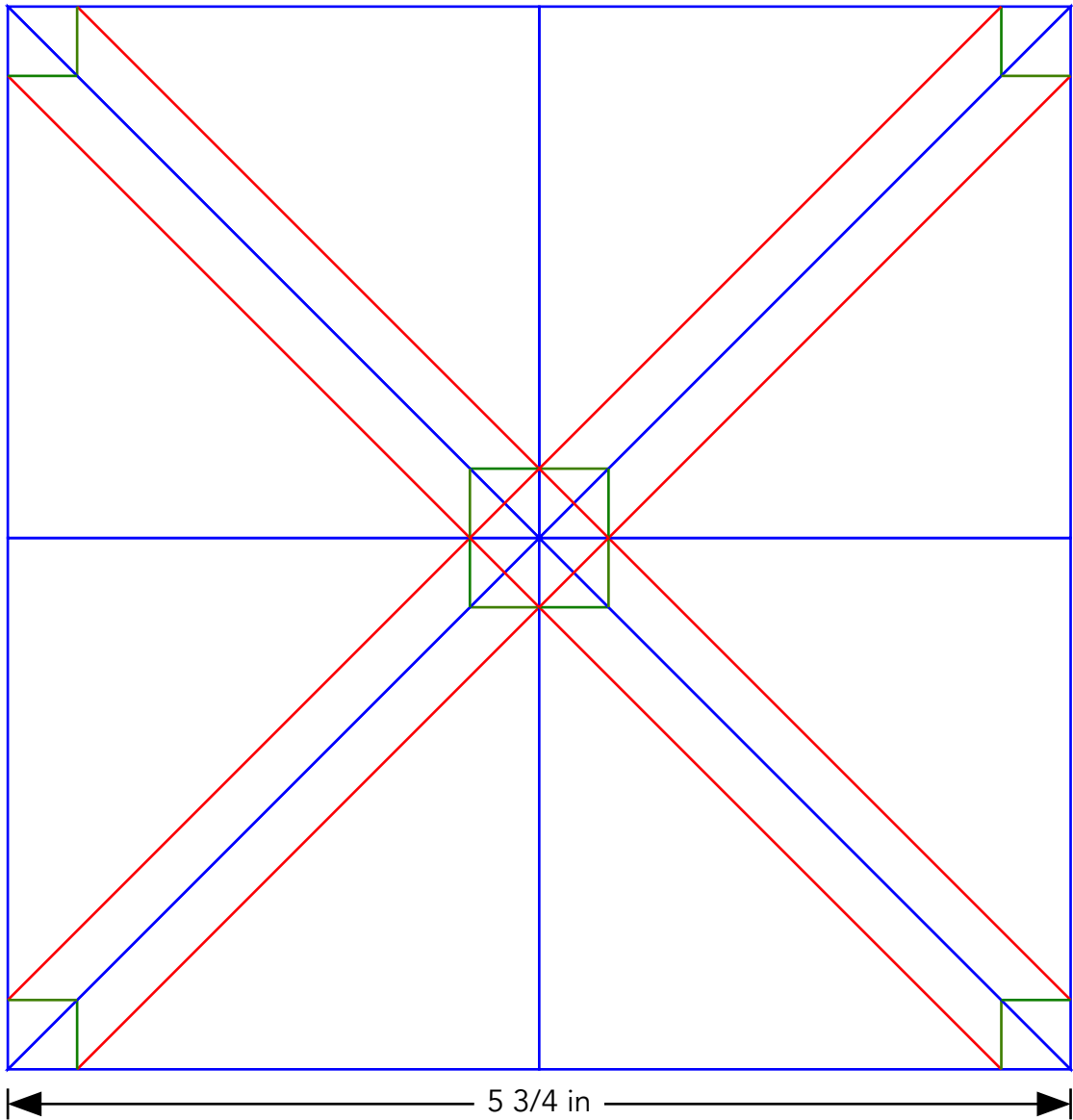
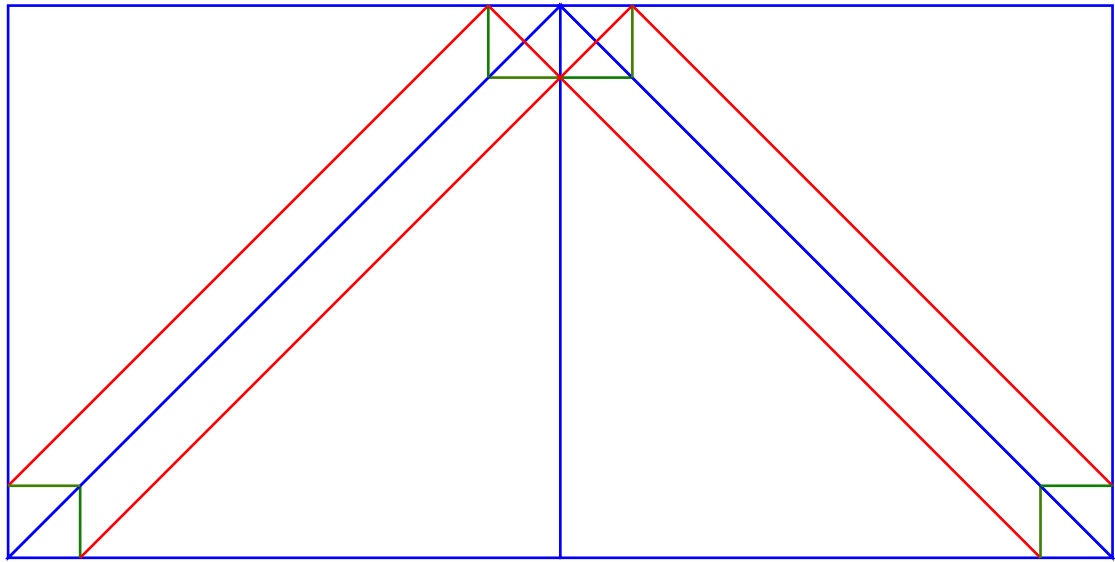
14. Sew the five rows together to complete the centre of the quilt top.

15. Sash the sides with the print 1" x 64 ½" print strips and then the top and bottom with the print 1" x 65 ½" print strips.

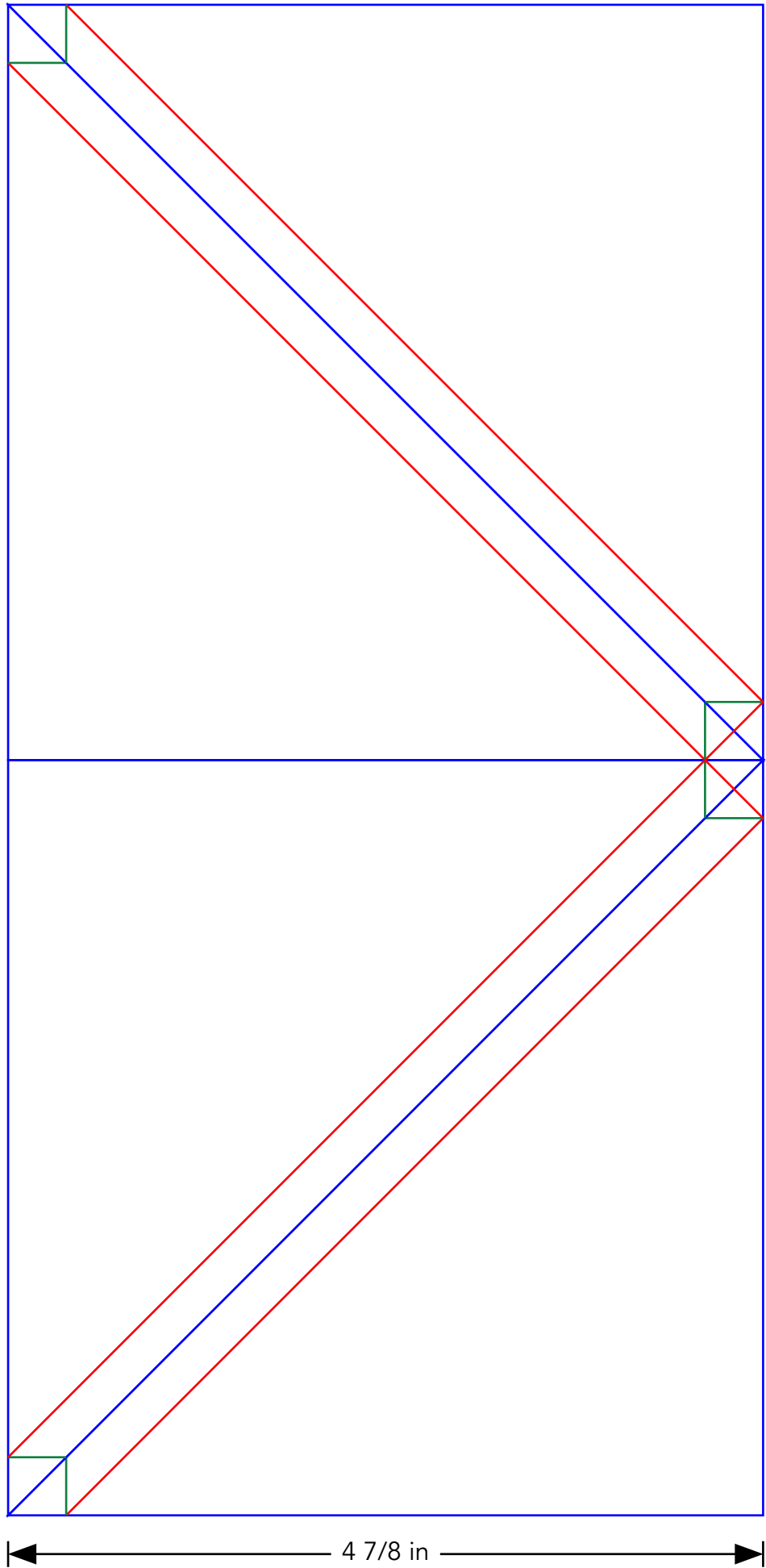
16. Sash the sides with the print 4" x 65 ½" and then the top and bottom with the print 4" x 72 ½" strips.

Finishing the quilt

1. Sew the binding strips end to end using diagonal or straight seams as preferred and press wrong sides together along the length to make a double fold binding.
2. Make a quilt sandwich, basting together the back, the wadding and the top.
3. Quilt as desired then trim square, removing excess wadding and backing. We quilted a diagonal cross hatch of lines approximately 3" apart using a 40wt Aurifil thread on the front and back.
4. Bind, taking care to mitre the corners.



Templates must be printed at 100% or “no scaling”. To ensure the templates are the correct size, measure the guide line to make sure it has printed at the correct length.



Templates must be printed at 100% or "no scaling". To ensure the templates are the correct size, measure the guide line to make sure it has printed at the correct length.



2509/R Posy



2511/Q Floral



2510/P Sprig



2512/Q Bud



2511/B Floral



2512/Y Bud



2514/T Sprinkles



2513/R Daisy



2510/Q Sprig



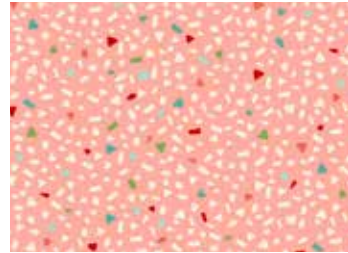
2513/B Daisy



2509/Q Posy



2512/T Bud



2514/P Sprinkles



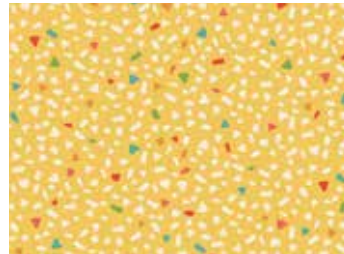
2509/B Posy



2511/T Floral



2513/G Daisy



2514/Y Sprinkles



2510/B Sprig